



## Text capabilities

### 1. Is it possible to work with True Type and Open Fonts?

Yes, **Type3 CAAV5 Based** allows all True Type and Open Fonts installed and all Vision numeric fonts, which are single line fonts.

### 2. Is it possible to use other fonts?

Yes, if they have been created from a part of Type3 stand alone named "**font editor**" feature that enables the customer to:

- create his own fonts, in any shape, and thus use them in **Type3 CAAV5 Based**
- Transform his actual fonts in **Type3 CAAV5 Based** fonts. Thus he benefits from all advantages of **Type3 CAAV5 Based** functionalities.

### 3. What is it possible to do with single line fonts (like Type3's one for instance)?

Single line fonts are mostly used to save time during the engraving process (machining).

### 4. Can I use "KNOWLEDGES" of CATIA with text's attributes?

Yes, you can use "formular, parameters, design table", of Catia to link an attribute of the text.

### 5. Can I work with Asiatic TrueType fonts (Chinese, Japanese, Korean,)?

Yes, you can work with Asiatic TTF. **Type3 CAAV5 Based** also allows the use of Arabic, Russian, etc... As long as you install CATIA on any non US or European Windows environment, you can retrieve the "exotic" Windows Fonts and work with them.

### 6. Is it possible and how to retrieve CATIA's fonts?

Yes it is possible. You just have to install your fonts in the same way you do in CATIA V5.

### 7. When I create texts or logos, what kind of entity do I get in CATIA V5?

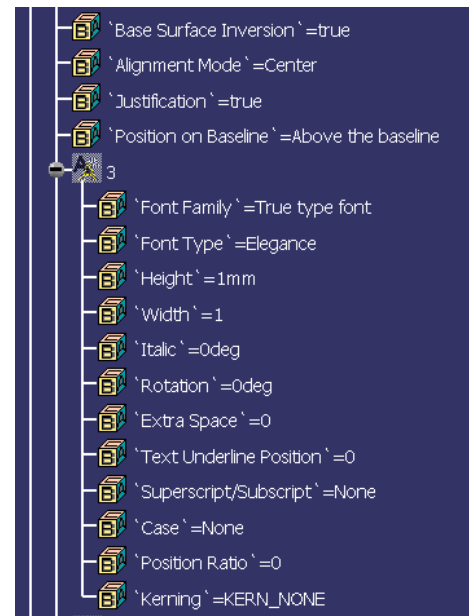
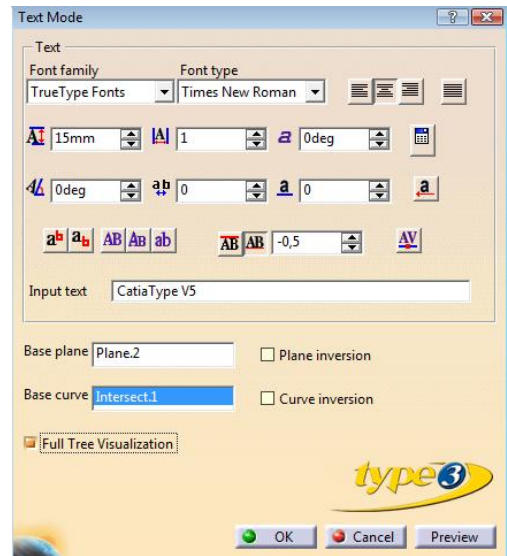
You get curves in CATIA. You can re edit them.

### 8. Can I re-edit the text that I have written?

Yes, a text object will be created in the tree; you can edit it again and change all attributes of the text or the text itself.

### 9. If I apply function on the text will those functions update if I change the text?

Yes a PAD or a MAPPING on the text will be update when you change the text or parameters of the text.



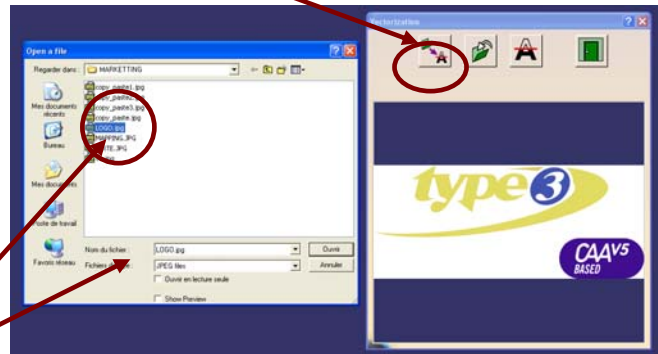


## Scan / Vecto functionalities

### 1. How do I import image files?

The process is easy: you just click the Vectorize Icon in Type3 Toolbar, then the "Vectorization" menu appears. To import a image file you click file Icon and then select the file in the data folder.

Select Bitmap file

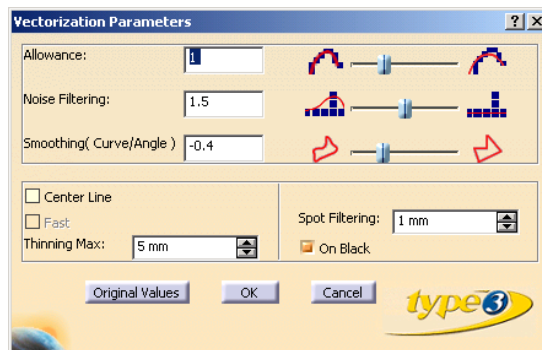


### 2. What type of formats can I import?

BMP, JPEG, TIFF, GIF, PNG etc.

### 3. What are the "Vectorization parameters" used during the vectorization process?

Imagine you have to import or scan a low quality image, these parameters enable the optimization of the retrieved model contours in CATIA V5.



Setting parameters of vectorization

- Allowance
- Noise Filtering
- Smoothing
- Spot Filtering
- Thinning max

### 5. Why a color reduction is used during the vectorization process?

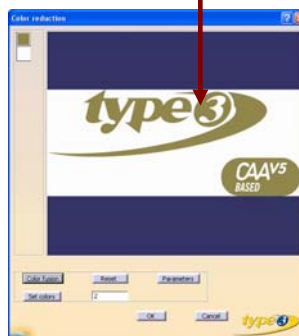
The color reduction allows the user to only select the colors of the parts of the design you want to decorate, and then only vectorise elements. The color reduction enables also to fuse different colors and have ONLY one contour.

Color reduction  
Selection of the black color in order to vectorize only the needed contour



### 6. How do I install a Twain Scanner?

Just like any usual PC's peripheric material. Type3 CAAV5 Based will recognize it automatically.





## Projection / Mapping Tools

### 1. What does "projection" and "mapping" mean?

- A projection will project in Z direction contours on a surface. The X and Y coordinates of the contour will remain unchanged.
- A mapping consists in applying one or more elements on the surface of a 3D object. The surface could be an irregular one and/or a multi-surface.



### 2. Do I get complete associativity in my projection or mapping?

Yes, as Type3 commands are fully integrated with other standard CATIA commands, it allows total associativity in the generated objects created in CATPart documents of CATIA V5. If you change the text (parameters and so on) Projected and mapped function will be updated. Of course, all operations you will do with one or the other will also be automatically updated.



### 3. Can I have 3D logos and texts, once projected or mapped?

Yes, it is possible. You have to use CATIA's functions (i.e. split, surface thickness).

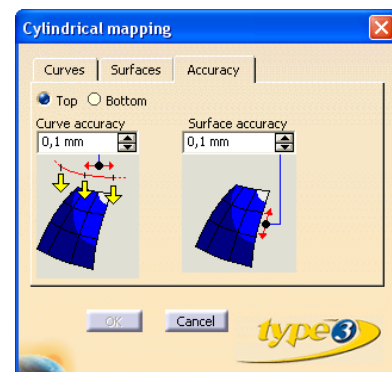
### 4. After a projection or mapping is it possible to change TrueType Font parameters?

The result of the projection or mapping will be changed according to the new parameters of your text.



### 5. What are the most common client applications for projected/mapped text and logos?

For mold makers, to apply text/numbers on parts, to identify with a logo, to decorate with an artistic text or a graphic model, to customize with a watermark, for instance...





## Copy / Paste functionalities

### 1. What can I do with the Type3 "Copy/Paste" functions for CATIA?

These functions allow data transfer between **CATIA V5** and all **Type3 solutions**, stand-alone CAD/CAM software, with a total respect of the geometric drawings.

They provide the user with all graphic 2D and 3D artistic capabilities of our solutions (NURBS curves, NURBS surfaces, Typeart, dialer/ruler, free text, etc.).

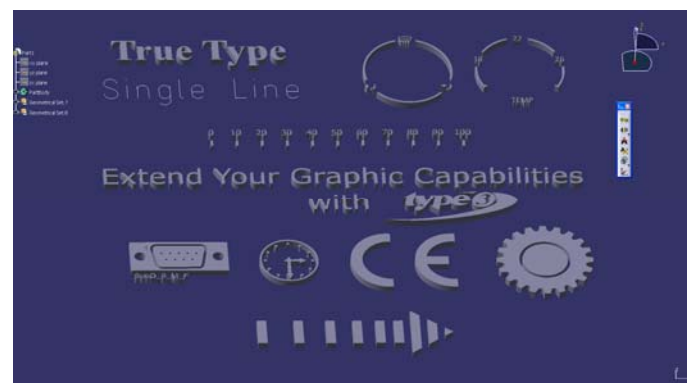
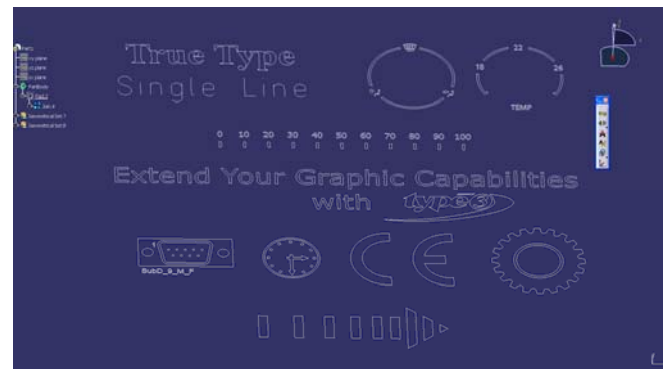
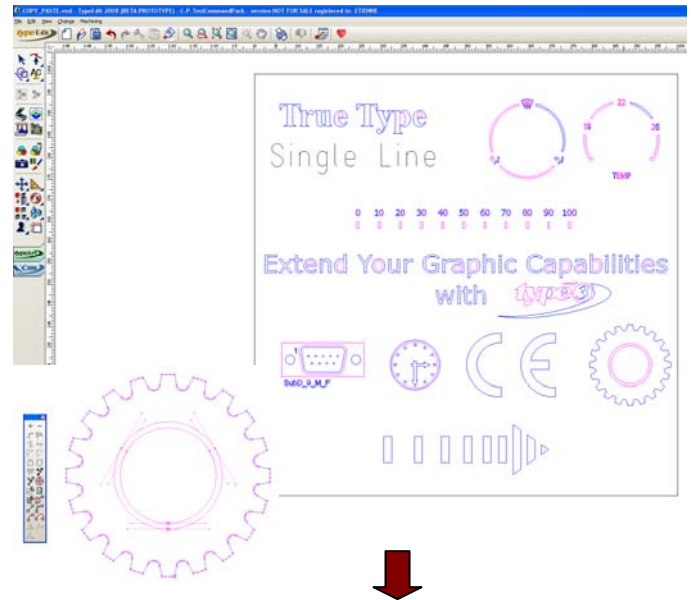
### 2. Which Type3 functions are more interesting to use with the Copy/Paste?

Thanks to **Type3 Gateway CAAV5 Based**, CATIA users will benefit from Type3 powerful functionalities, i.e:

- **CAD 2D:** graphic drawing, point mode, special effects (offset, envelopes), and special functionalities: alignment, mirror, etc.
- **CAD 3D:** bas relief artistic creation, sweeping of 3D profiles on 2D contours, Texture creation, SculptArt (3D real time sculpting, using graphic tablet for example,)
- **CAM:** a full range of dedicated toolpaths, for 2D or 2,5D cutting, engraving, finishing, sequence toolpaths, a dedicated "Intaglio" toolpath, and 3D machining for artistic shapes.

### 3. What kind of entities I will have in CATIA V5?

- According to entities in Type3: text, curves, dialer / rulers, etc.: you will have curves in CATIA
- All surfaces in Type3: you will have surface in CATIA.
- All TypeArt in Type3: you will have a cloud of point object in CATIA.



## What you have to know

1. Can I add Type3 CAAV5 Based toolbars in workbench?

*By default, Type3 CAAV5 Based toolbar is present in Part Design but you can add it in workbench by "customizing" pallet.*

2. What are the CATIA pre-requisites?

*For windows 32 bytes:  
From V5R16 and upper:*

*For windows 64 bytes:  
From V5R17 and upper:*

*Minimum configuration: MD1 and MD2*

*Targeted operating systems:  
Windows XP, Vista, Seven.*

3. Can I work under a UNIX Operating System?  
*Type3 CAAV5 Based does not run under UNIX environment.*

4. Which languages are available?  
*English, French, German and Japanese are available.*

5. Do I need a dongle? Can I work without just with a floating license (network)?  
*We can have different configurations:*
  - *with or without the dongle*
  - *stand-alone or floating license.*

## Strong Integration in CATIA V5

***XP, Vista, Seven; 32 or 64 bytes***



***Native & Integrative***

***Associativity***

***Parametric***



***Ease of use***



***Productivity Gains***